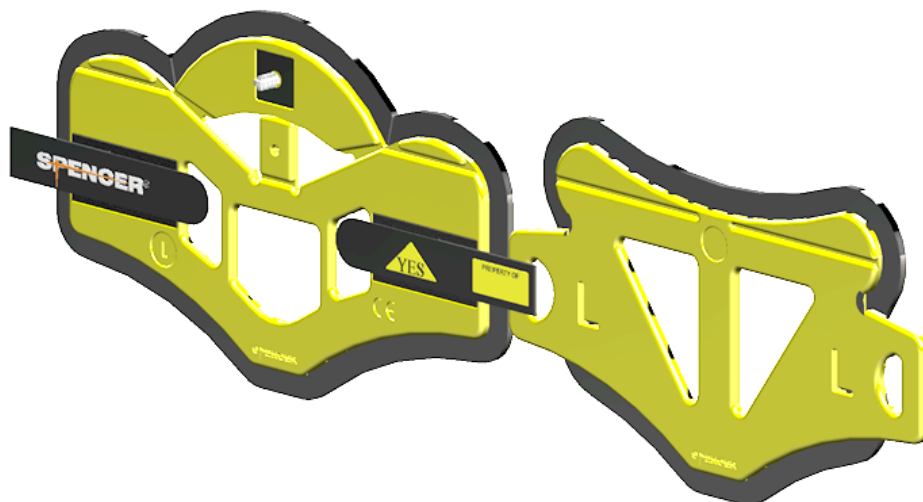


## YES SIZE L

Two piece cervical collar



Our technical background has led us to identify two types of cervical immobilisation:

- YES immobilisation, that allows the patient to say “yes” when the operator asks if all is ok

- Silent immobilising which occurs with all other devices without the YES technology and the patient, unable to speak can only nod his head to answer. This basic movement, normally required by ordinary immobilising devices, could be dangerous and be the cause of serious damage.

The two piece collar bases its physical principles on the ability to transfer onto the vertical components the energy applied by the operator during application of the collar round the patient’s neck.

This permits the correct extension of the spinal tract with a neutral alignment that avoids any mistakes.

The YES collars are manufactured in EVA and closed cell Polyethylene which guarantee optimal efficiency while retaining the flexo extension to a minimum, applying minimal pressure on the carotid and guaranteeing the compatibility with RX, TAC AND scanning systems.

The limited weight of the main structure and the original design have permitted the:

- increase the width of the front opening making access to the carotid pulse and for tracheotomy easier
- updated profile of all collars and with reduction of the number of sizes required to maintain the same scientific immobilising precision
- increased border surface to improve patient comfort
- increased thickness and density of padding inside offering even greater improvement in terms of patient comfort

### TECHNICAL DATA

#### Front part

Length	325 mm
Height	192 mm
Weight of fixing tapes	30 mm

#### Nuchal part

Length	335 mm
Height	207 mm
Weight	190 gr
Material	Eva and closed cell PE
Temp. For use	From -5 to +40°C
Temp for storage	From -10 to +50°C
Humidity	From 5 to 95%
Latex free	

QC30103A

YES size L

